



## GROOVE WALLS

Fast and efficient, SYMBIO Groove offers a simplistic solution with multiple options for privacy.



# SYSTEM ATTRIBUTES

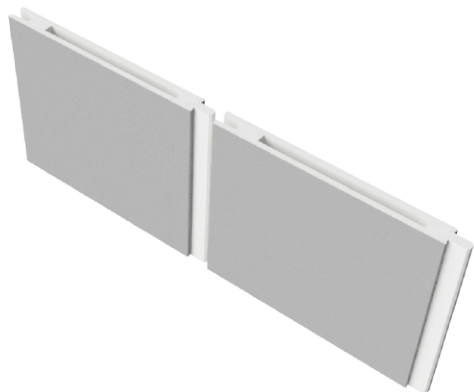
A solution to the challenge of how to have benefits of full height walls without the permanence and expense: SYMBIO Groove. Engineered with a progressive 'tongue and groove' panel design, Groove offers a practical and purposeful solution for your space division.



- Unitized - Factory assembled panels shipped and ready for installation.
- Basic panel frame dimensions:
  - 2-1/4" deep
  - 2 piece, 5/8" gypsum panels laminated on 1" construction core
  - Progressive design with tongue and groove, double groove, and make up panel configurations
- System height ranges up to 10' in 1/2" increments.



- Standard panel width of 24" with Groove Wall Systems. Make up panels can be designed for field fit to any dimension needed.
- Panels can be field adapted for vertical dimension constraints.
- Base height options - 4" and 6".



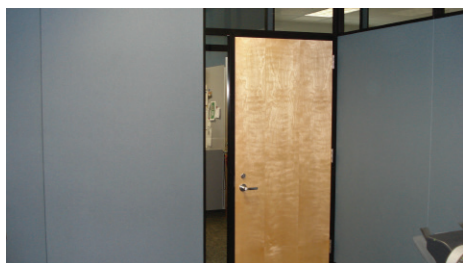
- Typical connection is resting on top of the carpet and attaching to the grid ceiling or soffit.
- Electrical, data, and audio/visual integration capable.
- Acoustical performance ranges from 34 to 40 STC depending on their configuration.





# + DESIGN PROPERTIES

Practical and purposeful, merged with a flexible foundation, Groove can be a catalyst for all your space planning.



## Privacy

Provides both visual and acoustical privacy at floor to ceiling height, with the ability to integrate glass clerestory.

### **FUNCTIONS AVAILABLE:**

- Hard surface, beveled edge gypsum
- Options to integrate full height or clerestory glass

### **FINISHES AVAILABLE:**

- Fabric
- Vinyl
- Painted
- No Finish (Field Painting/Finish)



## Flexibility

Kits containing minimal parts allow any client or end user to embrace churn and relocation with minimal disruption.

### **FUNCTIONS AVAILABLE:**

- Allows for onsite customizing and reconfiguration
- Panel simplicity makes inventory and re-planning easy
- Standard Class "A" fire rated vinyl and fabric wall coverings available
- Gypsum panels allow for a product that is up to 99% reusable
- Integrates with all of the SYMBIO family of products



## Integration

Both utility management and hang-on furniture capabilities are integrated for a consistent and complementary look.

### **FUNCTIONS AVAILABLE:**

- A SYMBIO standard 8-wire electrical system can be designed in a horizontal base raceway or in-panel
- Slotted standard designs are available to match a client's furniture layout
- Multiple door and accessory options are available





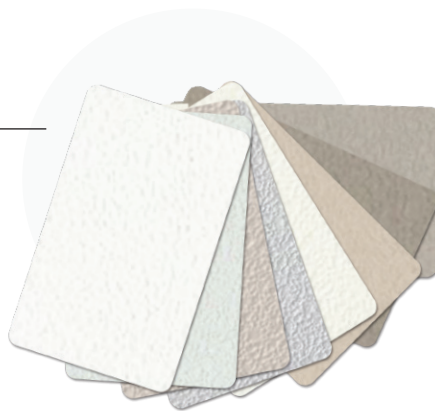
# + FINISHES

SYMBIO Groove offers a wide variety of design and finish options that bring your vision to life!

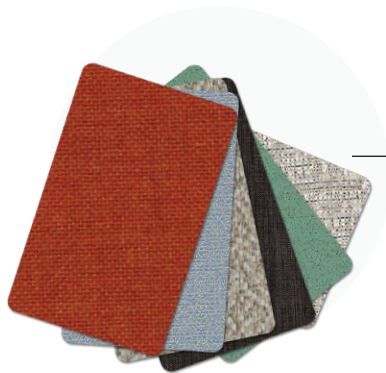
Types Available: Powder Coats, Decorative Powder Coating, Vinyl, Fabric, and Custom Finishes



Aluminums



Vinyls



Fabrics are obtained through a partnership of certain mills.

**Burch**

Category 1



**Guilford of Maine**

Category 2

**Stinson**

Category 3

Custom - Have something else in mind? We actively encourage and embrace challenges - Let's talk!

